

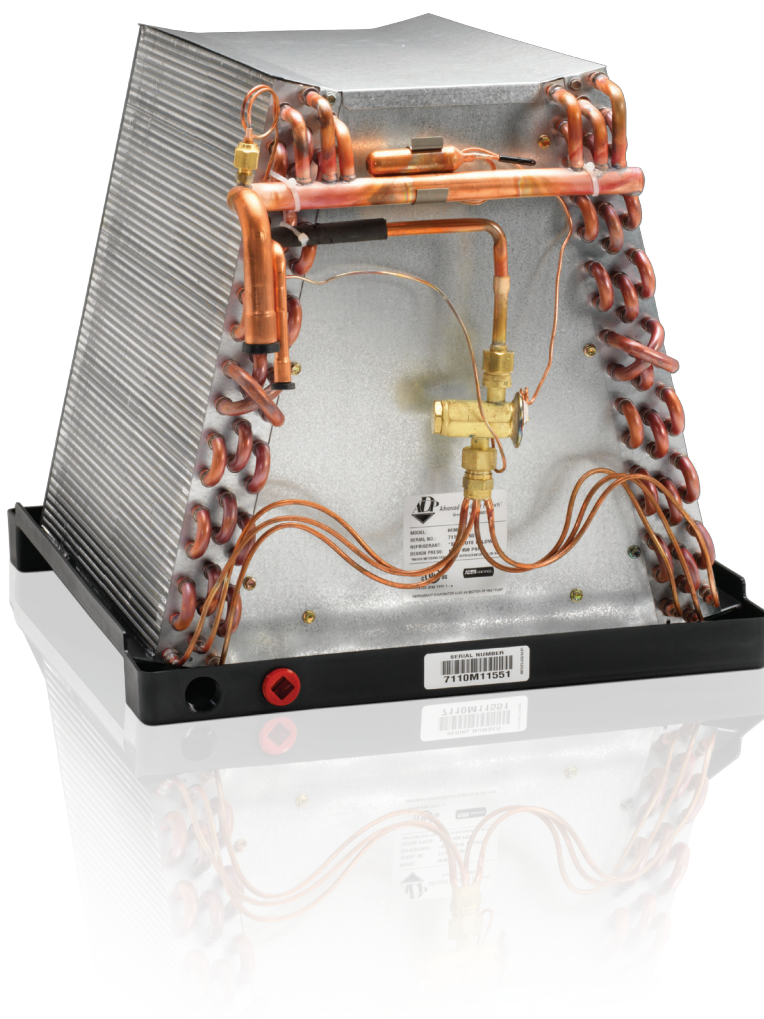


Product Guide

M Series...

M Series

Manufactured Housing Evaporator Coils

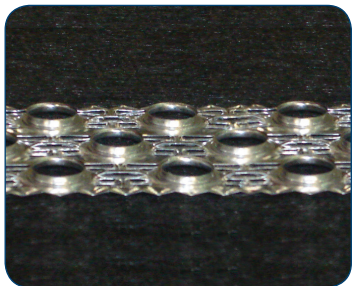


The Premier Upgrade for Any System...

Introducing M Series manufactured housing evaporator coils by ADP. These coils match perfectly with your system, providing an upgrade over standard manufactured housing coils.

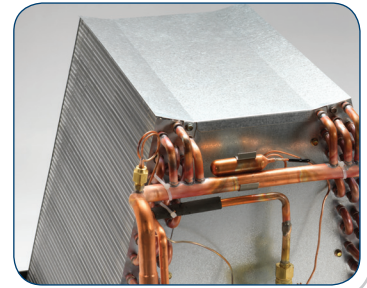


Pressure tested twice for superior performance at higher R-410A operating pressures

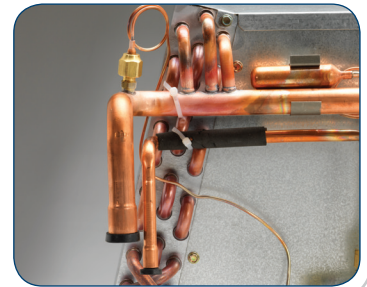


High performance lanced-fin design for improved efficiency

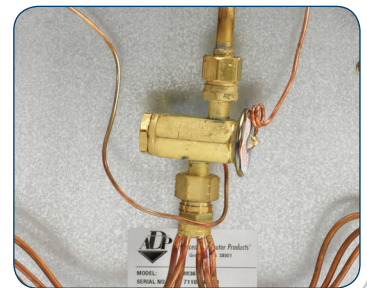
Filter friendly top plate allows an air filter to be placed directly on top of coil



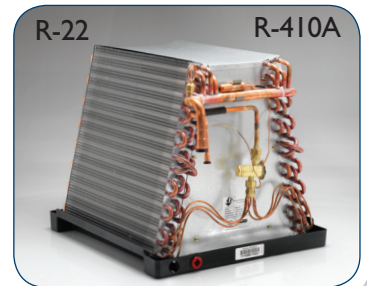
Sized out down-turned headers for easy line brazing



TXV with all threaded connections; no brazing required



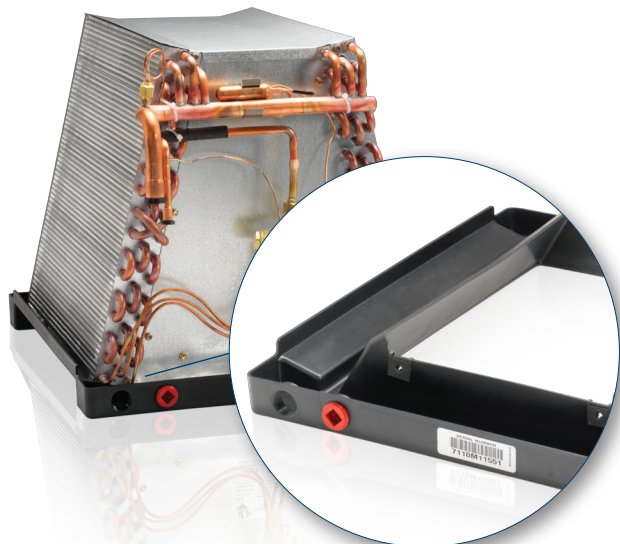
Coils charged with dry air for greater flexibility with both R-22 and R-410A applications





Blow-off Protection

ADP provides enhanced protection to prevent condensate blow-off.



Patent pending design

Reduces condensate blow-off that can occur in downflow installations

Reduced installation time

Drip shield molded into pan, no installation required

Contoured Drain Pan

ADP coils are designed to remove unhealthy standing water from the drain pan.



Sloped drain surface

Superior drainage versus standard manufactured housing coils

Enhanced air quality

Reduced opportunities for mold and bacteria growth due to standing water

The ADP Advantage...

FLEXIBILITY

ADP tailors custom solutions to meet your unique market needs.

QUALITY

ADP proprietary testing technology ensures leak-free performance at the higher operating pressures of R-410A systems.

SERVICE

ADP coils are made for seamless installation and easy access.

ENERGY SAVINGS

Models are available to achieve higher SEER levels for ENERGY STAR compliance, utility rebates, and federal tax credits.

WARRANTY

M Series coils feature a standard 5-year limited warranty.



Made in the USA
from US and imported parts

M 24 E32 6

Cabinet

M: Manufactured Housing
(Uncased)

Nominal MBTUH

Slab Number

E30
E31
W66
W67 etc.

Note: "W" denotes wider 19 5/8" Drain Pan

Metering Device

- 1: Piston (R-410A) *
- 2: Piston (R-22) *
- 3: Bleed A/C TXV (R-22)
- 4: Non-bleed A/C TXV (R-22)
- 5: Non-bleed HP TXV (R-22)
- 6: Non-bleed A/C TXV (R-410A)
- 7: Bleed HP-A/C TXV (R-410A)**
- 8: Bleed A/C TXV (R-410A)**
- 9: Non-bleed HP TXV (R-410A)

** 7 and 8 valve options available
only for York family products

* Piston will always be sized to match
the nominal BTU rating of the coil

MBTUH	R-22	R-410A
12:	41	41
18:	53	49
24:	59	53
30:	67	59
36:	73	67
42:	80	73
48:	84	76
60:	93	93

Proudly distributed by:

2175 West Park Place Boulevard
Stone Mountain, Georgia 30087
www.adpnow.com

ISO 9001:2008
—Registered Quality System—



SL-MAC-03
May 2016